



Customer: Pleasant Ridge Global, LLC  
 Customer Sample ID: T1 Salve  
 Laboratory Number: 20E0070-02



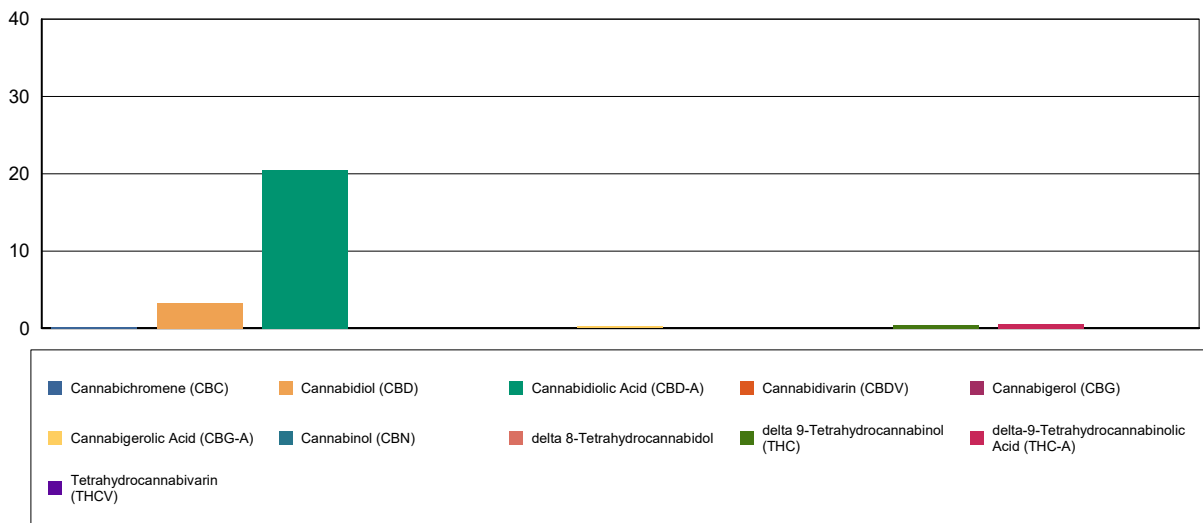
# Cannabinoid Profile

Extraction Technician: DF  
 Analytical Chemist: MF

Extraction Date(s)	Analysis Date(s)
5/11/2020	5/11/2020

Cannabinoids (HPLC)		Results	
	LOD (mg/g)	%	mg/g
Cannabidiol (CBD)	<0.050		
Cannabidiol (CBD)		0.33	3.29
Cannabidiolic Acid (CBD-A)		2.05	20.5
Cannabigerolic Acid (CBG-A)		0.03	0.255
Cannabigerol (CBG)	<0.050		
Tetrahydrocannabivarin (THCV)	<0.050		
Cannabinol (CBN)	<0.050		
delta 9-Tetrahydrocannabinol (THC)		0.04	0.424
delta 8-Tetrahydrocannabinol	<0.050		
Cannabichromene (CBC)		0.02	0.167
delta-9-Tetrahydrocannabinolic Acid (THC-A)		0.06	0.571
<b>Cannabinoids Total</b>		<b>%</b>	<b>mg/g</b>
Max Active THC		0.09	0.92
Max Active CBD		2.13	21.29
T.Active Cannabinoids		0.39	3.88
Total Cannabinoids		2.52	25.20
<b>Ratios</b>			
23.90:1 CBD to THC		0.04:1 THC to CBD	

## Cannabinoid (mg/g)



Reporting Limits will vary based on sample extraction weight used for the analysis.  
 Altitude Consulting, LLC utilizes NIST traceable Reference Standards and Certified Reference Material to calibrate analytical instruments along with proven analytical methods.  
 The methods are applied in the most ethical manner following good laboratory practice guidelines. The results of this report are based solely on the sample submitted and cannot be reproduced.